



مبارك بريدج
Mubarak Bridge




A SPECIALIST
MARINE EMERGENCY RESPONSE
COMPANY

Marine Emergency Response, Salvage & Specialist Maritime Solutions

BRIDGING THE GAP BETWEEN THE EMERGENCY & THE SOLUTION

In marine emergencies, seconds determine outcomes. Emergency response is defined by the ability to deploy the right people, with the correct equipment, to site without delay. The effectiveness of response is determined by:

- 1**  **PROXIMITY**
- 2**  **PREPAREDNESS**
- 3**  **DEPLOYMENT**
- 4**  **LOCAL KNOWLEDGE**



The Mubarak Bridge model has been carefully engineered to enable efficient and effective emergency response solutions, based on the rapid deployment of critical experience, skill and strategic assets. We are able to respond faster, based on our extensive Marine Emergency Response experience and footprint.



THE "GAP" IDENTIFIED

The Middle East (Gulf Region, Red Sea, Arabian Sea), the Western Indian Ocean, and the Southern African seaboard represent some of the world's most strategically significant maritime trade and energy corridors.




THESE CORRIDORS DEMAND:

- Immediate mobilisation
- Structured incident command
- Environmental protection capability
- Technical reinforcement when required

Proximity is fundamental to effective response.



OUR REGIONAL FOCUS ENABLES:

- Rapid mobilisation
- Immediate access to fleet and equipment
- Regional regulatory alignment
- Local operational knowledge
- Reduced escalation risk

Mubarak Bridge exists to close the gap between incident and control; efficiently, responsibly and without complexity.



MARINE EMERGENCY RESPONSE FOOTPRINT



- Primary Emergency response footprint
- Secondary Emergency response footprint
- Response bases
- Bridge Maritime Response Network



WHAT SETS US APART?

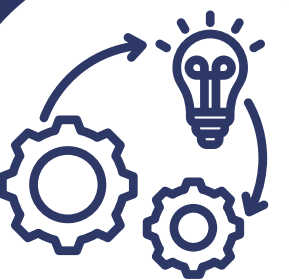


THE DIFFERENCE BETWEEN AN INCIDENT & A DISASTER: GETTING THE RIGHT PEOPLE, WITH THE RIGHT SKILLS TO SITE AS QUICKLY AS POSSIBLE TO DRIVE THE RIGHT DECISIONS

An emergency seldom occurs near a warehouse full of salvage equipment manned by seasoned salvors. This is particularly true in Southern Africa and the Western Indian Ocean, as there is a significant lack of marine industry responders and associated resources. However, with over 100,000 vessels passing through this area every year, accidents will happen.

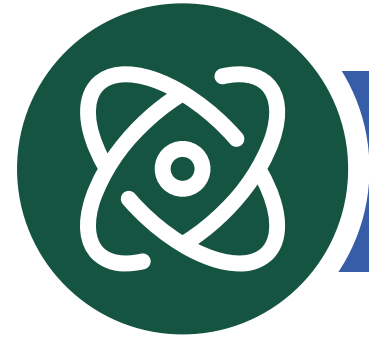


To bridge this gap and provide effective Marine Emergency Response services in these areas, Mubarak Bridge has developed an extensive network on the back of 30 years' experience in the region. Today, we are a specialist Marine Emergency Response company that prioritises getting the right responder on site quickly in order to drive the most relevant and effective solution to the emergency at hand.



We have positioned ourselves as a preferred MER specialist due to our unrivalled proximity, experience, ability to provide rapid response, skillsets, and deep knowledge and understanding of the areas we serve.





CORE EMERGENCY RESPONSE SOLUTIONS

Mubarak Bridge delivers a fully integrated marine response capability structured across three core pillars:



**MARINE EMERGENCY
RESPONSE**

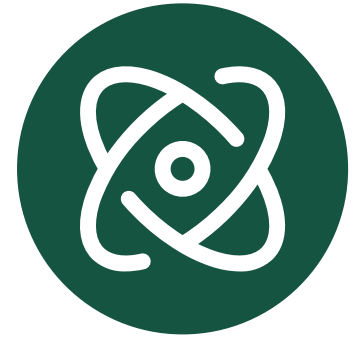


**SALVAGE &
SPECIAL PROJECTS**



**ENVIRONMENTAL &
POLLUTION RESPONSE**





CORE SOLUTION: MARINE EMERGENCY RESPONSE

Mubarak Bridge has extensive experience in responding to a wide range of marine emergencies, including managing fire, collision, grounding, flooding, sinking and spills to mitigate loss of life and environmental damage, as well as the preservation of client value and assets – through our emergency response and salvage services, offered 24/7 throughout the region.

Marine Emergency Response and Salvage services include:

- Marine Emergency Response
- Hydrographic surveys
- Diving services
- Marine salvage consultancy
- Cargo related solutions
- Pumping services
- Wreck removal
- Environmental care / pollution control
- Underwater bunker / cargo removal
- Underwater demolitions
- Towage





CORE SOLUTION: SALVAGE & SPECIAL PROJECTS

Where incidents require engineered recovery or complex marine intervention, Mubarak Bridge delivers structured Salvage & Special Projects capability.

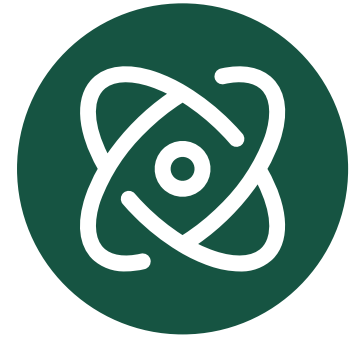
This Includes:

- Vessel refloating and complex salvage operations
- Wreck removal and structural intervention
- Offshore asset recovery and removal
- Heavy marine lifting
- Subsea and deep-water recovery
- Cargo recovery and engineered extraction
- Project-based marine intervention and technical consultancy

Salvage & Special Projects represents the integrated technical core of Mubarak Bridge.

International salvage coordination and specialist technical reinforcement are incorporated through collaboration with Bridge Maritime Limited.





CORE SOLUTION: ENVIRONMENTAL/POLLUTION EMERGENCY RESPONSE

Marine casualties often carry environmental consequences.

Mubarak Bridge delivers structured pollution response and environmental protection through:

- Tier 1 & Tier 2 oil spill response
- Tier 3 coordination and escalation support
- Bunker and cargo transfer from disabled vessels
- Ship-to-ship and ship-to-shore transfer operations
- Hazardous substance containment
- Shoreline protection and remediation support

Our approach is disciplined and accountable; protecting coastlines, trade routes and ecosystems in some of the world's most sensitive maritime corridors.





SUPPORT SERVICE OFFERING

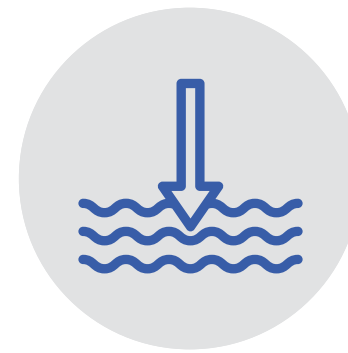


مبارك بريدج
Mubarak Bridge

Based on our regional infrastructure and coordinated execution model, Mubarak Bridge provides:



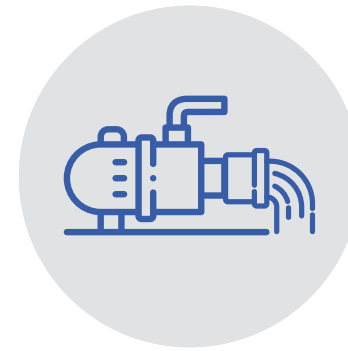
SEARCH & RECOVERY



DEEP WATER



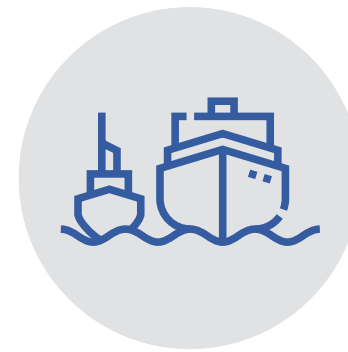
DIVING



FLUID TRANSFER



**RAPID DEPLOYMENT
HYDROGRAPHY**



TUGS & TOWAGE



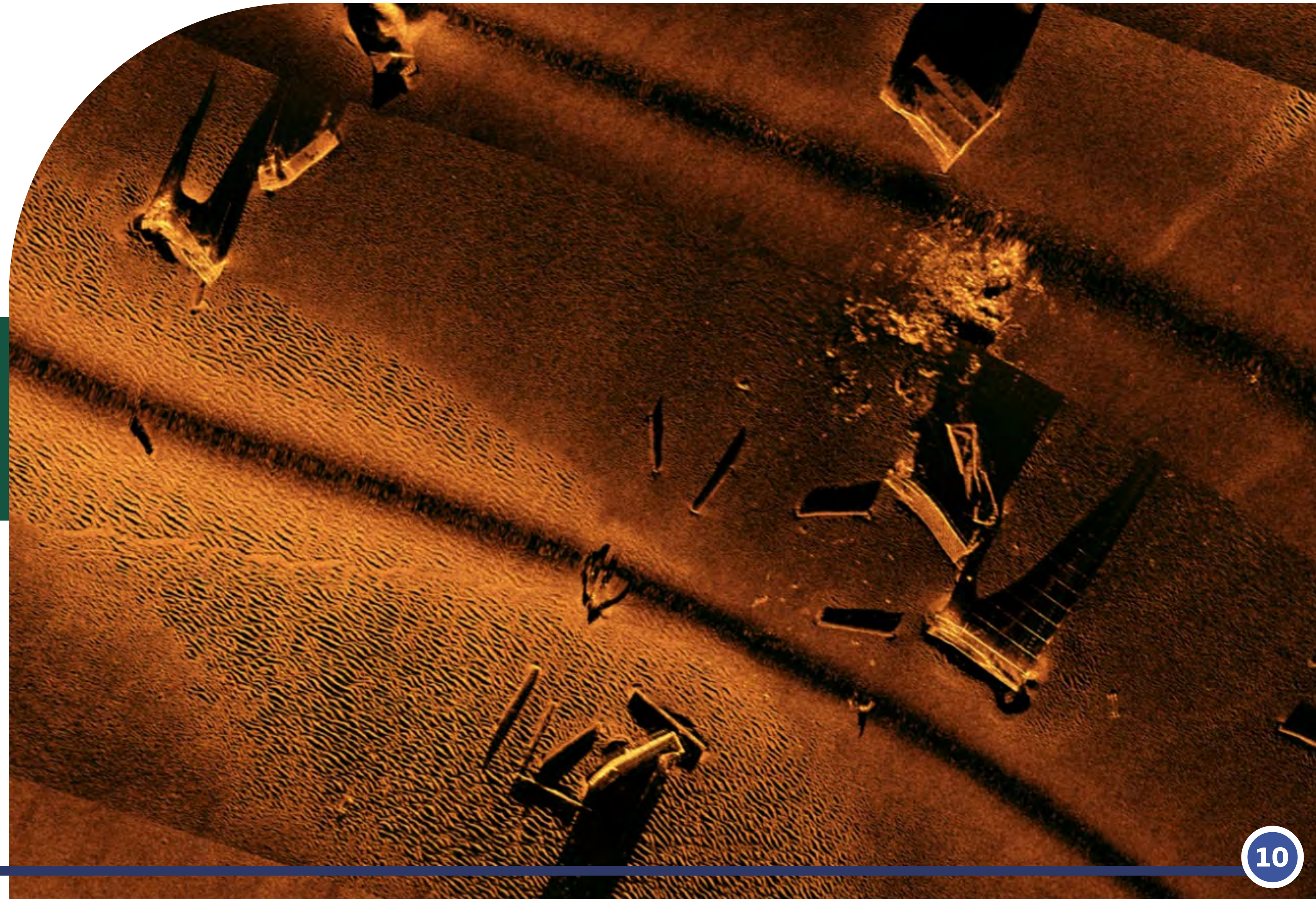


SEARCH & RECOVERY

Using a combination of ancient techniques, practiced by mariners through the millennia, alongside the latest in technology, Mubarak Bridge has established a sound record demonstrating our ability to locate artifacts, big and small, lost in the pelagic realm.

The use of technology can only yield the maximum positive effect if applied with a deep understanding of the ocean and a specific knowledge of the area you are working in.

Our success lies in our ability to leverage the insights and experience we have gained during our decades on the water to utilise technology in an intuitive manner that yields significant results.





DIVING



Diving is in many respects synonymous with Salvage and Marine Emergency Response operations. With a history steeped in diving and subsea operations across all sectors, Mubarak Bridge is able to provide safe and innovative solutions to the most complex of underwater challenges, at all depths of water.

Due to the dynamic nature of a marine emergency, a particular and specialised type of diver is required, and experience and competence throughout the team is more critical in this environment than any other. We understand this gap and are able to bridge it effectively.



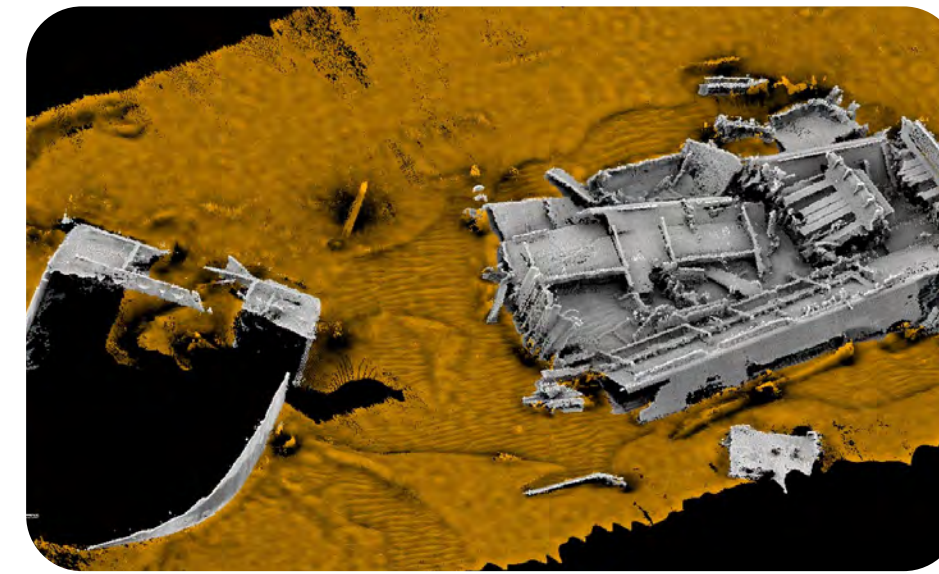
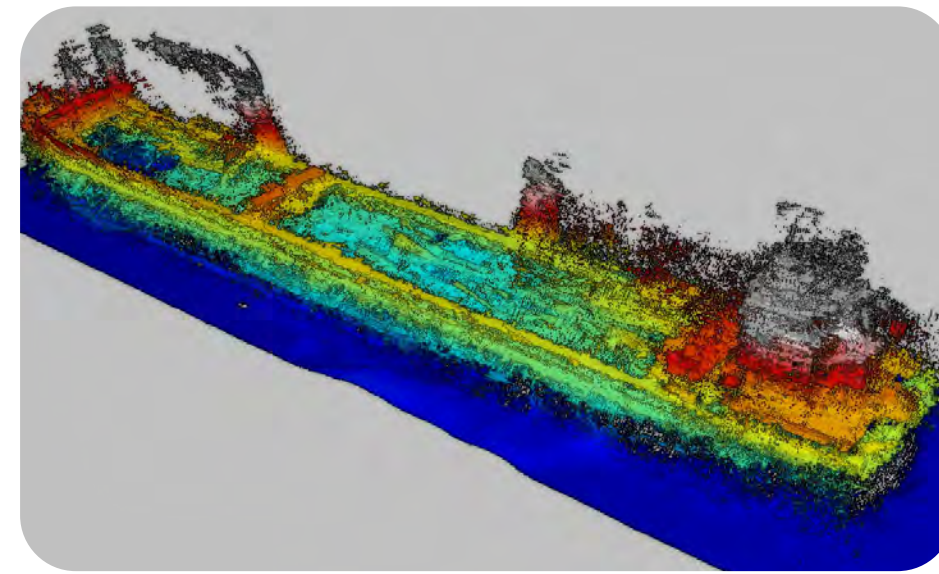
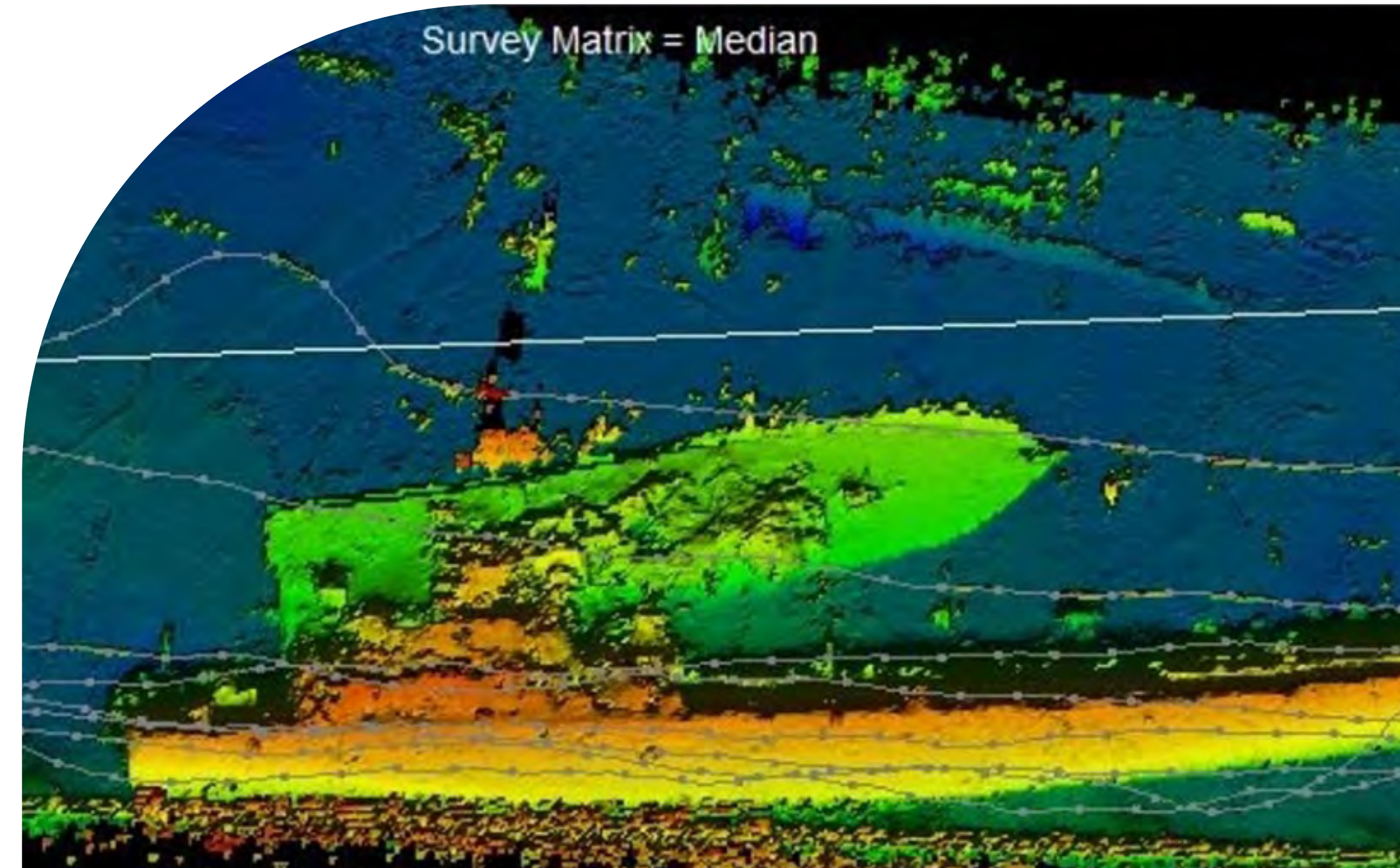


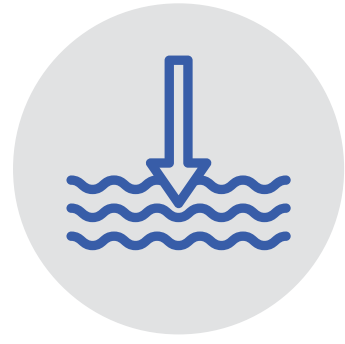
RAPID DEPLOYMENT HYDROGRAPHY

In a maritime emergency, having accurate and reliable information combined with a quick response, is essential. It is crucial to understand the nature of the seabed subsea structure, condition of the casualty and other artefacts that have a big impact on vital, early decision-making.

With the latest technology at our disposal, we can present 3D modelling of structures with IHO levels of precision, processed on-site, in the shortest time possible, and with extremely accurate and quantitative results.

Our equipment has been selected for both its technical compliance as well as its portability. We are able to fly a team in with a full IHO compliant multibeam spread as accompanied luggage. This equipment is configured for mobilisation onto almost any vessel of opportunity, from a dugout to a PSV.





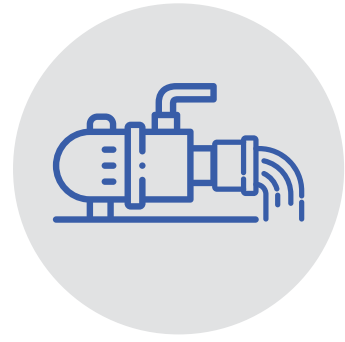
DEEP WATER



Bridging the gap between the energies sector and maritime emergencies, Mubarak Bridge has the ability to repurpose a wide range of subsea skills and resources, spanning the globe, and apply them to the most complex of deep water challenges.

Using a combination of deep water search and location techniques, DP construction vessels, saturation diving and Remote Operated Vehicles, we can access almost any incident.





FLUID TRANSFER

With the biggest pump rental resource in Southern Africa, representing the ability to move more than 500 000 litres of liquid per second (or 1,8 billion litres per hour) and a rapid response heritage, we will definitely have the right solution for you.

POWER SOURCE

- Diesel
- Hydraulic
- Electrical
- Pneumatic
- Venturi

PRINCIPAL CHARACTERISTICS

- High head
- High volume
- High head & volume
- High viscosity
- Solid handling
- Intrinsically safe
- Slurry
- Sludge
- Chemical
- Dredging
- Fire fighting

MOBILITY

- Trailered
- Manhandled
- Truck crane
- Crane deployed
- Barge mounted
- Ready to fly
- Helicopter lifted

PUMP MECHANISM

- Centrifugal
- Diaphragm
- Lobe
- Gear
- Venturi
- Self-priming
- Surface
- Submersible





TUGS & TOWAGE



The region has no significant offshore energies and marine industry, resulting in a distinct lack of floating resources in one of the largest marine spaces containing one of the busiest shipping lanes.

The result is that a tug is seldom where it is needed and, more often than not, a tug of opportunity will be required to service an emergency.

Mubarak Bridge has positioned itself to service the greater region through our ability to offer a first responder service, salvage teams and basic equipment to manage the incident, including resources of opportunity, tugs and support vessels.

PREPARED FOR HIGH-RISK MARITIME ENVIRONMENTS

In high-risk maritime environments, preparedness defines outcomes.

Mubarak Bridge combines regional strength with coordinated international expertise, ensuring that when an emergency occurs, the right capability is already within reach.





مبارك بريدج
Mubarak Bridge

WWW.MUBARAKMARINE.COM
WWW.BRIDGEMARITIME.COM